



高品质不锈钢表面加工的代名词

CCY IS THE SYNONYM OF HIGH QUALITY ASSURED STAINLESS PROCESSING



佛山市建春友金属科技有限公司

FOSHAN CHAIN CHUAN YOU METAL TECHNOLOGY CO.,LTD



据点分布

Locations of Marketing Networks



建铝集团据点分布

The Group Location

华东通路点

海安建铝 Haian Chain Chon

建铝 (中国) 精密不锈钢科技
Chain Chon (China) Precision
Stainless Steel Technology

永锡行精密钣金
Yongchanghang Precision Metal

昆山建昌 (中国区总部)
Kunshan Chain Chon
China Chief Operation Center

宁波建铝 Ningbo Chain Chon

华南通路点

CCY
佛山建春友 Foshan Chain Chuan You

佛山建铝 Foshan Chain Chon

华北通路点

北京建昌 Beijing Chain Chon

天津建昌 Tianjin Chain Chon
天津建昌天津分公司
Tianjin Chain Chon Tianjin Branch

淄博建昌 Tianjin Chain Chon Zibo Branch

海外通路点

美国建铝 U.S. Chain Chon

台湾营运总部
Group Chief Operation Center

马来西亚建铝 Malaysia Chain Chon

泰国建铝 Thailand Chain Chon

公司简介 Brief Introduction



CHAIN CHUAN YOU is a joint venture established between the large international corporation-Chain Chon Group in Taiwan and Sumitomo Corporation, which is among the Top 500 Global Corporation in Japan. It started in 2006 with investment added to \$40million and the total site covers an area of 43,000Sq m. Now CCY is the biggest stainless steel processing plant in south China with annual turnover of \$50million in 2016.

CCY adopts the advanced facilities and efficient management to supply the most quality assured products to our distinguished clients, we are proud to be the vender of many world class companies, among them are GE, WHIRPOOL, SAMSUNG, ELECTROLUX, etc.

We aim to be one of the top companies which is beneficial to members, clients and society, by emphasizing our members' ability and creativeness in accordance with our management principles of "Teamwork" and "Contribution to Society", corporate culture of "Unity" "Specialize" "Growth" and "Honor".

佛山市建春友金属科技有限公司，是大型跨国企业台湾建铝集团与世界500强日本住友商事株式会社合资企业。2006年11月成立，分三期建设总投资4000万美元，位于环境优美的顺德科技工业园，厂房占地面积43000多平方米。拥有现代化的生产设备，先进的管理体制。集自主研究、开发、生产及销售于一体的高档不锈钢制造企业，目标是建成华南地区最高品质、最专业的不锈钢表面加工及配送中心。

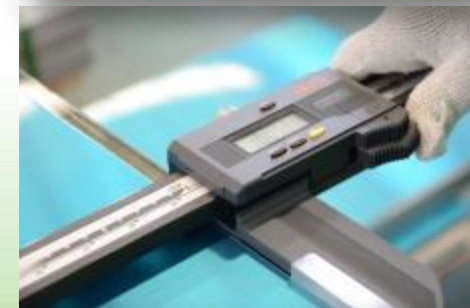
秉承“积极创新、追求卓越、全员参与、服务社会”之经营理念，以“团结、敬业、成长、荣誉”为公司企业文化，重视每一位员工的才华和创造力，致力实现员工、客户、社会共赢的一流企业。



公司简介 Brief Introduction



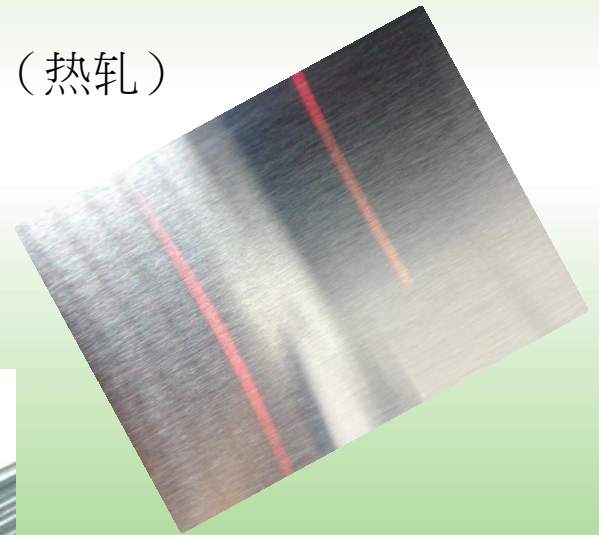
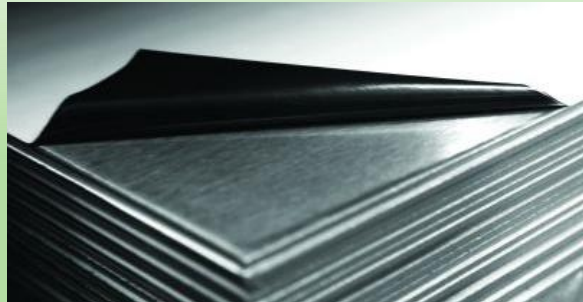
- 2006.10.1 日本住友商事、建铝集团合资成立
Japan Sumitomo Corporation and Chain Chon Group jointly invested to set up CCY.
- 2006.11 合资公司“佛山市建春友金属科技有限公司”设立完成
The joint venture Chain Chuan You mental Techology Co.,Ltd(CCY) was established.
- 2006.12 土地签约并确定落户“顺德科技园”
CCY signed a land contract and settled in ShunDe Sci-tech Park.
- 2007.01.26 举行动土奠基仪式，正式项目动工
CCY held foundation stone laying ceremony and started its projects.
- 2007.02 与广东六建签署总工程承包合同
CCY signed a Contract for Engineering Projects with Guangdong Liu Jian Company.
- 2007.03 一期钢构、土建全面开工
The structural steelwork and the construction of first phase was started.
- 2007.07 一期土建完工
The Civil Engineering Construction of first phase was finished.
- 2007.08 一期总设备安装调试
Installed and debugged the equipment of first phase.
- 2007.09 正式试产
CCY formally put into operation.
- 2007.11 一期投入生产
The construction of first phase was put into production.
- 2012.05 二期钢构、土建全面开工
The structural steelwork and the construction of second phase was started.
- 2012.09 二期土建完工
The Civil Engineering Construction of second phase was finished.
- 2012.10 二期总设备安装调试
Installed and debugged the equipment of second phase construction.
- 2013.01 二期投入生产
The construction of second phase was put into production.
- 2022.04 三期土建完工
The Civil Engineering Construction of third phase was finished.



营业项目 Items of Business



1. 我司提供高品质的不锈钢卷研磨、分条、开平；
2. 代理、销售：酒钢、宝新、浦项、太钢、联众、奥托昆普、台湾远龙、JFE、NSSC等；
3. 不锈钢卷、板：
 - A. 钢种：304、316、310、201、202、430、409、410、443、439等；
 - B. 标准：中国国标、美标、日标、欧标、德标等；
 - C. 表面：NO.1、2B、BA、NO.3、NO.4、NO.6、HL、SB、8K、耐指纹等；
 - 厚度：0.3mm-3mm（冷轧）、3mm-50mm（热轧）
 - 宽度：最大加工宽度1600mm；
 - 可提供各种进口、国产保护膜；



主要设备 Main Equipment



公司主要设备：

1. 整卷油磨线3条（最宽可磨1600mm）
2. 分条线5条
3. 精整飞剪开平线6条
4. 8K研磨线1条
5. 耐指纹设备2条
6. 钢卷全油磨研磨机组最具代表性，全油研磨技术，减小研磨高温造成板材变形，单双面同步研磨，满足各种表面的要求
7. 公司设备研磨HL（发丝纹）、雪花砂面（NO.3/NO.4/NO.6）、SB、8K等
8. 激光切割、等离子切割、折弯、自动焊接等



Main Equipment:

1. Three coil-coil whole oil grinding lines. (Maximum size of width -1600mm).
2. Five precision slitting lines.
3. Six precision shearing lines.
4. 8K mirror polishing line.
5. Two anti-fingerprint coating line.
6. CNC (1600W) coil-wide oil mill grinding machine is the most representative. Oil-based abrasive technology can reduce panel deformation caused by high grinding temperature. Synchronous double-faced lapping can meet the requirements of a variety of surfaces.
7. Grinding out HL surface(Hair Line), snow surface(NO.3/NO.4/ NO.6), SB, mirror surface, etc.



设备介绍 Equipment



设备名称：CNC(1600W)钢卷全油磨研磨机组
FACILITY NAME: CNC(1600W) Coil Polishing Mill

加工表面 POLISHING SURFACE	加工厚度 THICKNESS	加工宽度 WIDTH	钢卷内径 INSIDE DIA.	卷重 COIL WEIGHT
NO.3/NO.4/ NO.6/HL/SB	0.3mm-3.5mm	Max 1600mm	508mm-610mm	Max 20mt

特性 FEATURE

- 1、全油研磨技术，减少高温造成板材变形
Reduce thermal deformation by using polishing oil.
- 2、6+2磨头，上3下3
6+2 polishing heads,
3 each for top and bottom.
- 3、单/双面同时研磨，满足各种表面需求
Operable to polish single-side/both-sides to meet the needs of every surface.



磨砂工艺对比(Finishes Comparison)



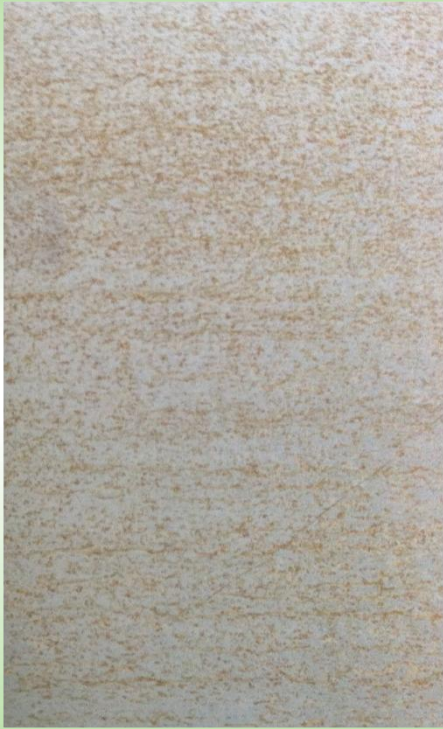
比较	优点	缺点
板磨 Dry Polishing	生产设备成本低 工艺简单 Low cost, Simple	档次低、效率低、亮点多 砂样不均、容易产生不良，如振痕 手感差、 只能根据砂带的粗糙度来控制砂纹的粗糙度 Low quality&efficient
普通 水油卷磨 Normal Wet Polishing	砂样均匀； 效率稍高； Smoother&More consistent&More Efficient	档次中低； 手感一般； 亮点依然存在； 缺乏光泽度； 污染环境； Normal smooth&Low reflectivity&Bright points&Pollution
整卷 全油磨 Whole Oil Polishing	档次高；光泽度高； 砂样均匀、稳定； 效率高； 表面细腻，高档； 无污染； Top Grade&Smooth&Efficient Fine Reflectiveness&Consistent No Pollution	设备成本高； 维护成本高； Equipment cost high Maintenance cost high

24小时盐雾测试

24 Hours Salt Spray Test



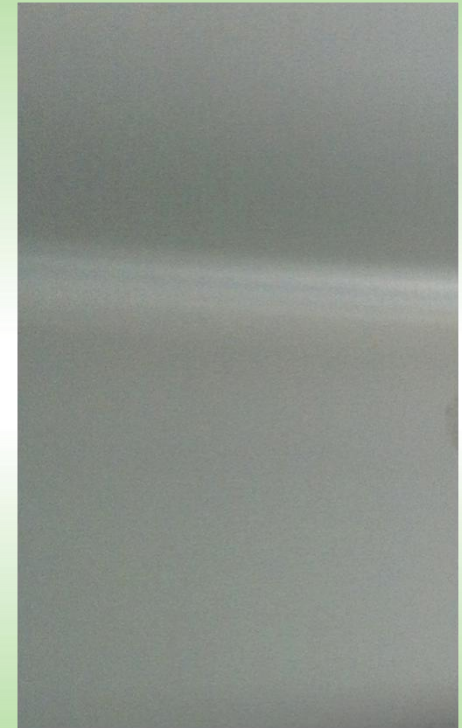
比较Comparison



板磨
Dry Grinding



普通水油磨
Water&Oil-Polishing



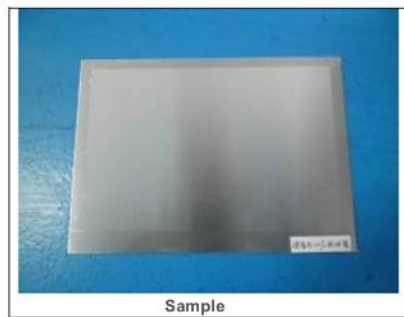
CCY全油磨
CCY Whole Oil-Polishing

96小时盐雾测试

96 Hours Salt Spray Test



全油磨 Fully Oil-Polishing



Sample



Sample



Salt Spray 24H



Salt Spray 48H



Salt Spray 72H



Salt Spray 96H

Test Report No. SDHGR130300607FT Date: Mar.25, 2013 Page 2 of 6

TESTS AND RESULTS

Test Conducted:
BS EN ISO 9227:2006-Corrosion tests in artificial atmospheres-Salt spray tests

Scope:
/

General Test Condition:
The following test program was conducted in a laboratory environment maintained at 15°C to 25°C and 50%±5 RH. The sample was individually tested after conditioning in the test environment for at least 24 hours prior to conducting the test.
The complete detailed procedures may be found in the referenced specification and are only summarized herein. The results obtained for each of the applicable tests are presented in their respective section describing the

Sample Item No.	Area of defects, A (%)	Appearance rating
# 1	0(No defects)	10
# 2	0(No defects)	10

Test conditions:
 Concentration of sodium chloride (collected solution) : 50g/l ±5g/l
 Chamber temperature : (35±2)°C
 Average collection rate for a horizontal collecting area of 80cm² : 1.5ml/h±0.5ml/h
 pH of collected solution at 25°C±2°C : 6.5~7.2
 Exposure period : 96h

Test result(s):

Sample Item No.	Area of defects, A (%)	Appearance rating
# 1	0(No defects)	10
# 2	0(No defects)	10

Note: Appearance rating refers to EN ISO 10289:2001, as follows:

Area of defects, A (%)	Appearance rating
0(No defects)	10
0<As0.1	9
0.1<As0.25	8
0.25<As0.5	7
0.5<As1.0	6

Signed for and on behalf of SGS-CSTC Co., Ltd.
 Jack Yao Approved signatory

This document is issued for the use and for electronic use only. It is the property of SGS-CSTC Co., Ltd. Any other use is prohibited. The information contained herein is confidential and for internal use only. It is not to be distributed outside the company without the prior written approval of the company. Any other use is prohibited. The information contained herein is confidential and for internal use only. It is not to be distributed outside the company without the prior written approval of the company. Any other use is prohibited.

SDHG
Member of the SGS Group (SGS SA)

设备介绍 Equipment



设备名称：DC 宽幅纵剪机组
FACILITY:DC SLITTER LINE

加工厚度 THICKNESS	加工宽度 WIDTH	钢卷内径 INSIDE DIA.	卷重 COIL WEIGHT	排刀条数 NUMBER OF BLADES
0.3mm-3.0mm	25mm-800mm	508mm-610mm	Max 6mt	1.0/28
0.3mm-3.5mm	25mm-1600mm	508mm-610mm	Max 20mt	1.0/28

特性 FEATURE

- 1、入料卷宽最大1600MM，满足不同原料
Able to cut MAX 1600MM coil width.
- 2、使用日本大东刀具，保证加工精度
High efficiency by using
made-in-Japan blades.



设备介绍 Equipment



设备名称：FNC飞剪式大横切机组
FACILITY:FNC Leveling/Shearing Mill

加工厚度 THICKNESS	加工宽度 WIDTH	剪切长度 LENGTH	钢卷内径 INSIDE DIA.	卷重 COIL WEIGHT
0.3mm-2.0mm	100mm-800mm	150mm-2500mm	508mm-610mm	Max 10mt
0.3mm-3.0mm	300mm-1600mm	300mm-6100mm	508mm-610mm	Max 20mt

特性 FEATURE

- 1、6重式精整机，平整效果特佳
High efficient straightening result by six fold Leveling mill.
- 2、双面覆膜、静电衬纸
Laminate both sides and put a film / paper interleave.
- 3、飞剪式剪切工艺，减少剪切停留的摩擦
Rotary shear machine can reduce loss of processing.



设备介绍 Equipment



设备名称：耐指纹机组

FACILITY:FINGERPRINT RESISTANT

加工厚度
THICKNESS

0.3mm-3.0mm

加工宽度
WIDTH

1300mm

加工长度
LENGTH

卷/Coil

特性 FEATURE

采用奈米技术环保涂层，具金属光泽又便于清洁

Adopt environmental coating based on nanotechnology to make surface more metallically glossy and easy to clean.



设备介绍 Equipment



设备名称：8K机组

8K FACILITY:8K PRODUCTION LINE

加工厚度 THICKNESS	加工宽度 WIDTH	加工长度 LENGTH
0.4mm-6.0mm	1500mm	5m

特性 FEATURE

- 1、4排25个磨头，有效减少磨头花等表面瑕疵
Total 25 polishing heads in 4 rows to effectively reduce surface defects including polishing head imprints, etc.
- 2、研磨速度可达2.5米/分钟
The velocity of polishing reach 2.5m/minute.
- 3、氧化铝无污染研磨，水循环利用等先进工艺
Adopt advanced technology of alumina pollution-free polishing and water circulation recycling, etc.



设备介绍 Equipment



设备名称：剪床、折床、等离子、激光、压花等机组



6米CNC剪床
 入料厚度：2-20mm
 入料宽度：max6100mm



3米CNC剪床
 入料厚度：2-12mm
 入料宽度：max3200mm



激光切割機
 加工厚度：1-20mm
 加工長度：6500mm
 加工寬度：2500mm
 加工精確度：正負0.2mm



激光切割過程



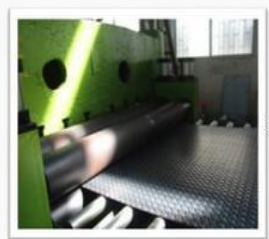
6米CNC折床
 入料厚度：2-12mm
 入料宽度：max6100mm
 压力吨位：800T



3米CNC折床
 入料厚度：1-8mm
 入料宽度：max3200mm
 压力吨位：200T



大型壓花機
 入料厚度：0.3-5mm
 通用寬度：1500mm
 通用長度：6000mm



壓花過程



水下等離子切割機
 最大切割厚度：150mm
 最大切割宽度：3000mm
 最大切割长度：18000mm



水下等離子切割過程



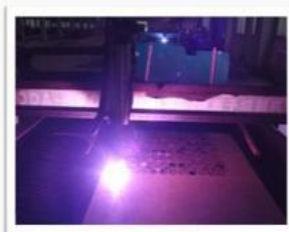
小型滾圓機
 入料厚度：0.5-3mm
 通用寬度：1500mm



水刀割機
 加工厚度：1-40mm
 加工長度：3000mm
 加工寬度：1800mm
 加工精確度：正負0.2mm



干式等離子切割機
 最大切割厚度：60mm
 最大切割宽度：3000mm
 最大切割长度：18000mm



干式等離子切割過程



大型厚板干拋機
 通用厚度：3-50mm
 通用規格：3300-12000mm
 表面研磨：
 80#\120#\180#\240#\320#\400#



扁鐵矯直機
 入料厚度：2-16mm
 入料宽度：160mm

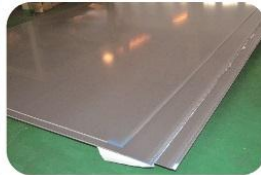
设备介绍 Equipment



设备名称：折床

3米数控剪床

3 m CNC shears



入料厚度 Feed material thickness	入料宽度 Feeding width
2-12mm	Max 3200mm

3米数控折床

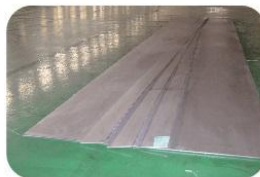
3 m CNC shears



入料厚度 Feed material thickness	入料宽度 Feeding width	压力吨位 Pressure tonnage
1-8mm	Max 3200mm	200T

6米数控剪床

6 m CNC shears



入料厚度 Feed material thickness	入料宽度 Feeding width
2-20mm	Max 6100mm

6米数控折床

6 m CNC shears



入料厚度 Feed material thickness	入料宽度 Feeding width	压力吨位 Pressure tonnage
2-12mm	Max 6100mm	800T

设备介绍 Equipment



设备名称：等离子

台湾水下数控等离子切割机

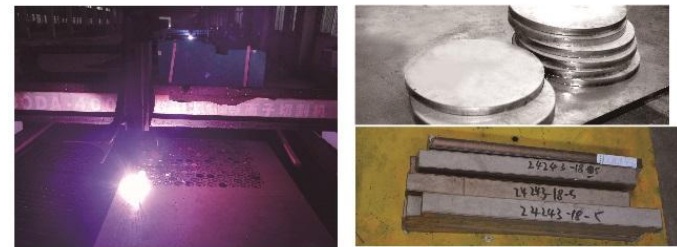
Taiwan underwater CNC plasma cutting machine



最大切割厚度 Maximum cutting thickness	最大切割宽度 Maximum cutting width	最大切割长度 Maximum cutting length
150mm	3000mm	18000mm

德国干式数控等离子切割机

The German dry CNC plasma cutting machine



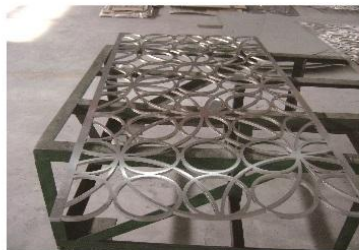
最大切割厚度 Maximum cutting thickness	最大切割宽度 Maximum cutting width	最大切割长度 Maximum cutting length
60mm	3000mm	18000mm

设备介绍 Equipment



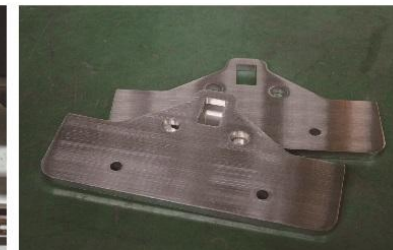
设备名称：激光机组

瑞士进口激光切割机 Laser cutting machine inport from Switzerland



加工厚度 Processing thickness	加工长度 Processing length	加工宽度 Working width	加工精确度 Pressure tonnage
1-20mm	6500mm	2500mm	± 0.2mm

三菱激光机 Mitsubishi laser machine



加工厚度 Processing thickness	加工长度 Processing length	加工宽度 Working width	加工功率
12mm	3000mm	1500mm	4.5千瓦

设备介绍 Equipment



设备名称：

扁铁矫直机

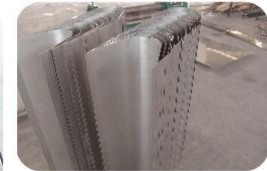
Flat iron straightening machine



入料厚度 Feed material thickness	入料宽度 Feeding width
2-16mm	160mm

小型滚圆机

Small Rounding Machine



入料厚度 Feed material thickness	入料宽度 Feeding width
0.5-3mm	1500mm

全自动大型压花机

Automatic large embossing machine



入料厚度 Feed material thickness	适用宽度 Applicable width	适用长度 Suitable length
0.3-5mm	1500mm	6000mm

滚圆机

Rounding Machine



最小内径 Suitable thickness	最长加工 Applicable specifications	最大厚度 Surface grinding
350mm	3200mm	16mm

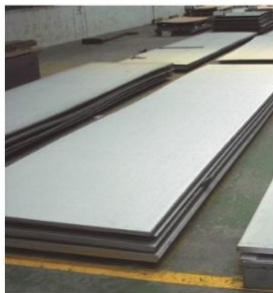
设备介绍 Equipment



设备名称：

自动整平裁切机组

Laser cutting machine



剪切材料:	不锈钢热轧板	带钢厚度:	0.4-6.0mm
带钢宽度:	800-1600mm	钢卷内径:	Φ 508mm& Φ 610mm
钢卷外径:	Φ 2000mm	钢卷重量:	25T (Max.)

自动焊接机

Mitsubishi laser machine



加工厚度 Processing thickness	加工长度 Processing length
2-100mm	6000mm

设备介绍 Equipment



设备名称：

立式车床 Vertical Lathe



厚度不限 Thickness is not limited	最大内径 Maximum internal diameter 100mm	最小外径 Minimum outside diameter 1600mm
----------------------------------	--------------------------------------------	--------------------------------------------

大型厚板干抛机 Large thick plate dry cast machine



适用厚度 Suitable thickness 3-50mm	适用规格 Applicable specifications 3300-12000mm	表面研磨 Surface grinding 80#/120#/180#/240#/320#/400#
--------------------------------------	---------------------------------------------------	----------------------------------------------------------

型材弯曲机 Frame Bender



入料厚度 Feed material thickness 80mm	入料宽度 Feed material width 80mm	最小卷制直径 Minimum rolling diameter φ 1000
-----------------------------------------	-------------------------------------	----------------------------------------------

质量认证 Quality Certification



优势 Superiority



及时的服务
Instant Service

完整的库存
Available Stock



良好的品质
Premium Quality

准确的交货期
Accurate Delivery



高端家用电器 High-end home appliances

- Microwave oven 微波炉
- Washing machine 洗衣机
- Gas stove 灶具
- Range Hoods 烟机
- Refrigerator 冰箱
- Sink 水槽
- Elevator door 电梯门

五金产品 Hardware products

- Hardware accessories
- 五金配件
- 工程项目

户外产品 Outdoor products

- BBQ oven 烧烤炉
- Decorative panels 装饰板

设备 Equipment

- 设备面板 shell of equipment
- 门板 door shell

产品应用 Product Application



Kitchen Products 厨房产品



Microwave ovens



Range Hood



Range Hood



Gas stoves



产品应用 Product Application



冰箱



产品应用 Product Application



Barbecue 烤炉



产品应用 Product Application



Home Appliances 家用电器



Sterilizer



Coffee Machine



Refrigerator



Coffee Machine



Dish Washer



Washing Machine

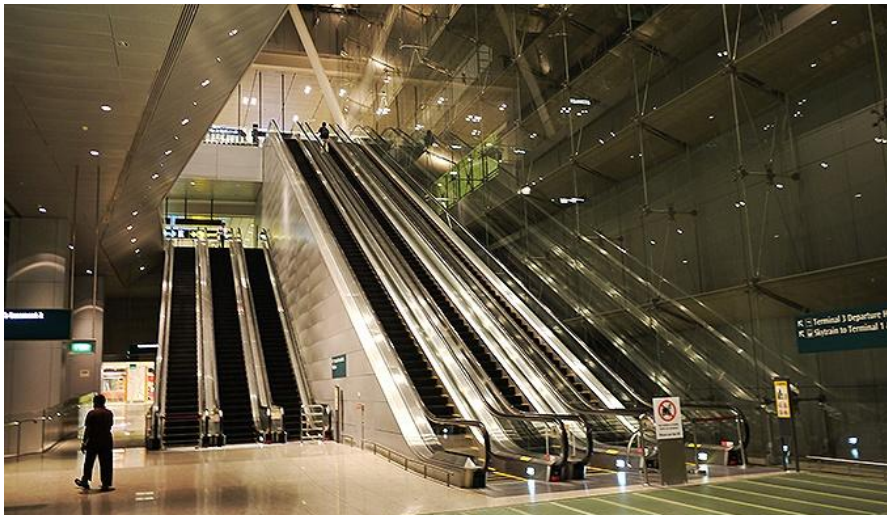


Electric Steamer

产品应用 Product Application



Elevator and Escalator 电梯

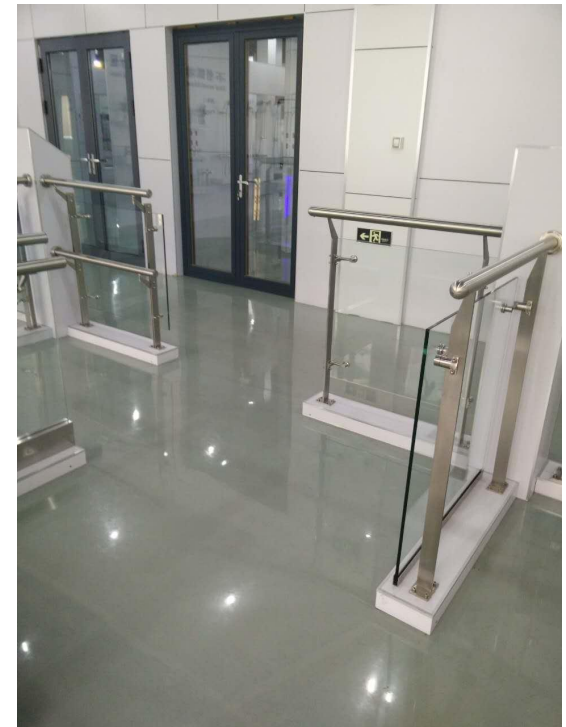


产品应用 Product Application



Hardware

- 立柱



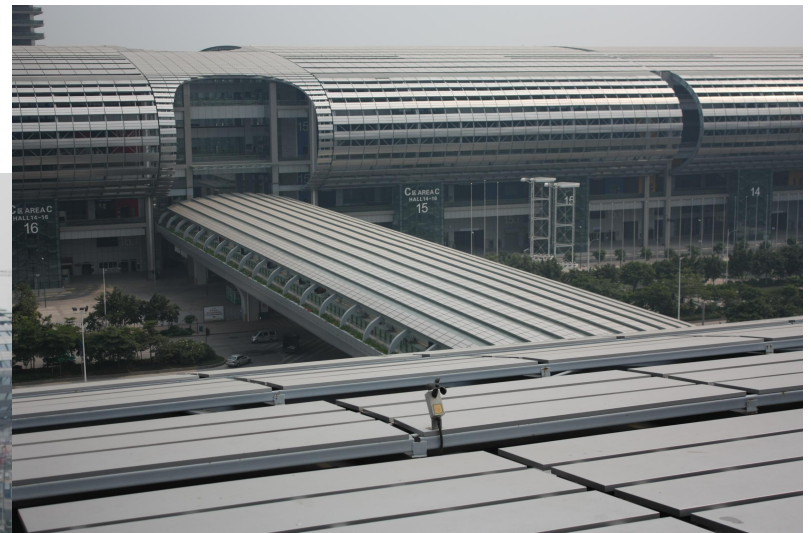
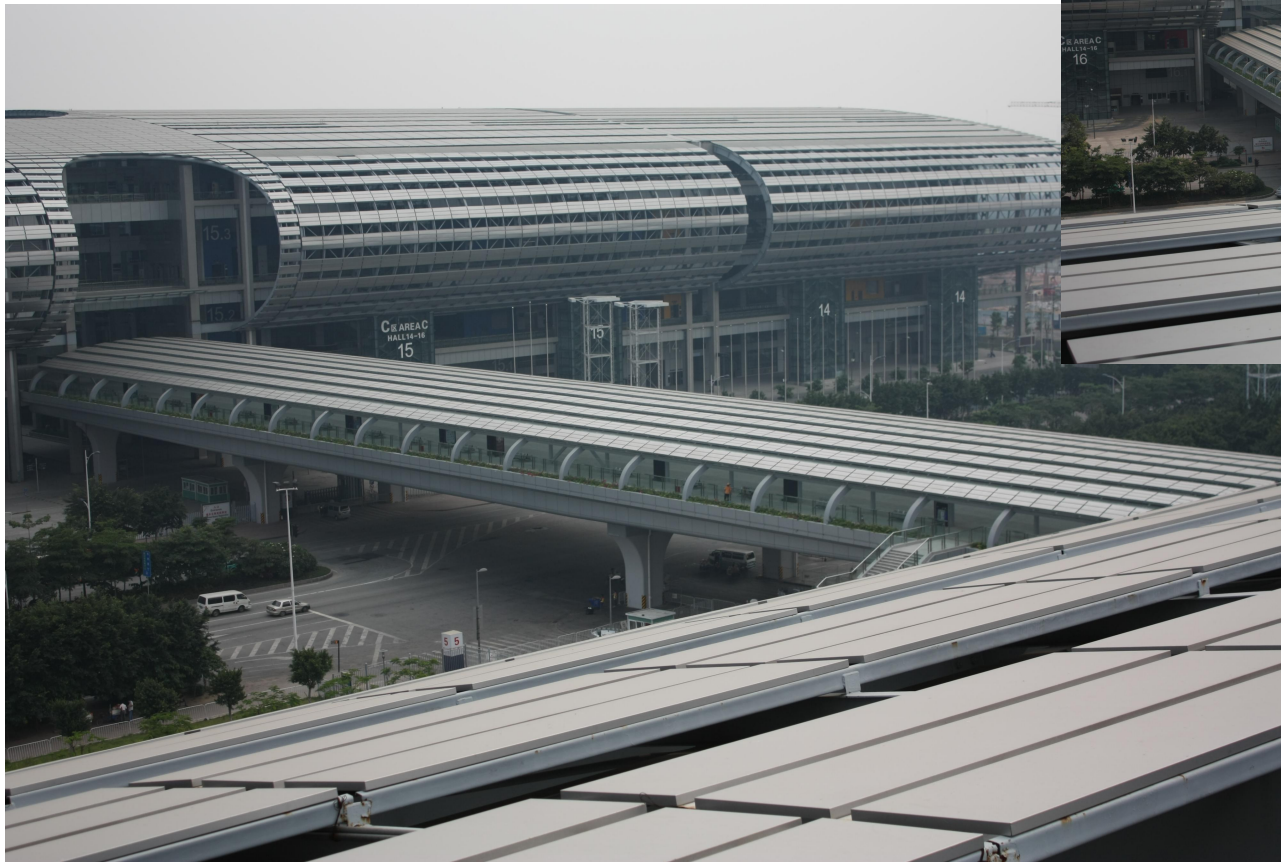
Hardware 五金



工程案例



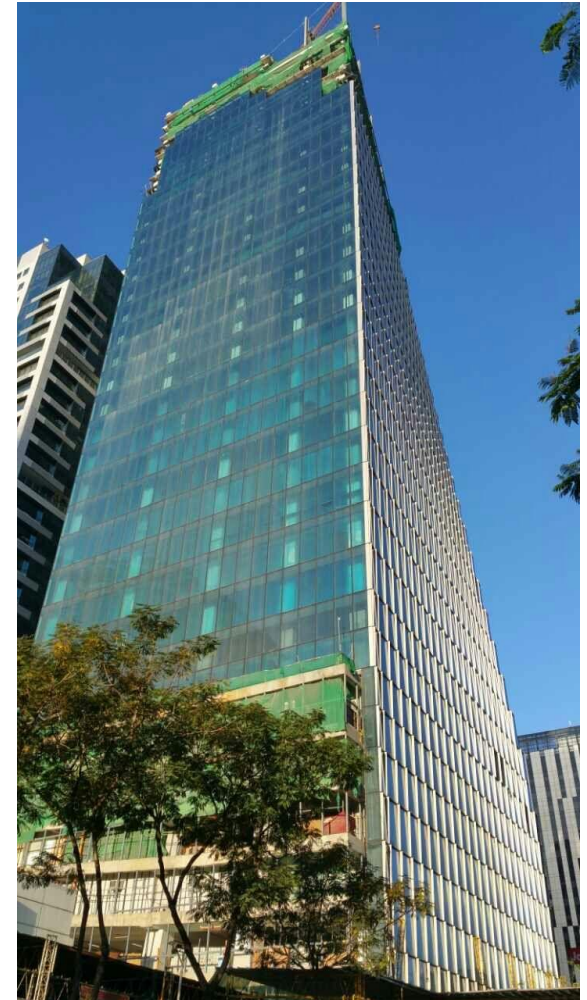
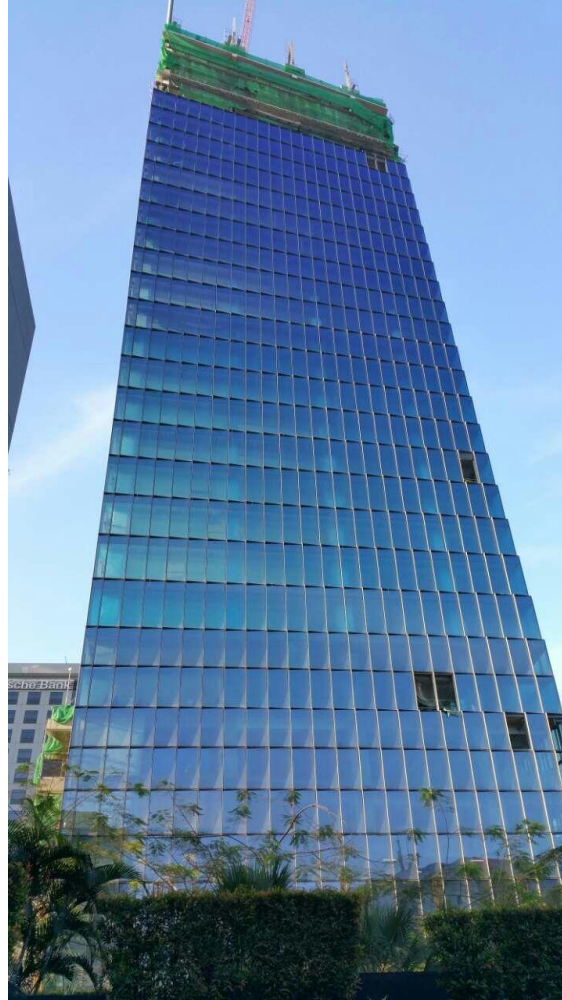
工程案例一：广州会议展览中心（琶洲展馆）天桥屋面板：约300万



工程案例



工程案例二：新加坡 The Curve Tower ; 316L 约80吨



工程案例



工程案例三：深圳平安大厦裙楼幕墙；316L 约200吨



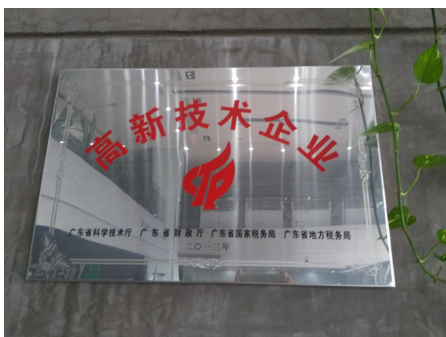
工程案例四：深圳国际会展中心；



公司荣誉



公司荣誉



联络 Contact Information



佛山市建春友金属科技有限公司
FOSHAN CHAIN CHUAN YOU METAL TECHNOLOGY CO.,LTD.

不锈钢材料行销/专业COIL研磨/加工

佛山市建春友金属科技有限公司

FOSHAN CHAIN CHUAN YOU METAL TECHNOLOGY CO.,LTD.

广东省佛山市顺德区大良街道五沙新达路3号

NO.3 Xinda Road , WuSha Section of Daliang street , Shunde Dist, Foshan ,
GuangDong province , PR of China

邮编 (PostCode) : 528333

卢志立 营业部 (Sales&Marketing Department)

Mobile:13825535606

Tel: 0757-22803668-8002

Fax: 0757-22803678

Website: www.czysteel.com.cn

E-Mail:sales16@ccysteel.com.cn



谢谢您 Thank you

打造 **CCY** 成为
高品质不锈钢表面加工的代名词

HIGH QUALITY STAINLESS STEEL
SURFACE PROCESSING

